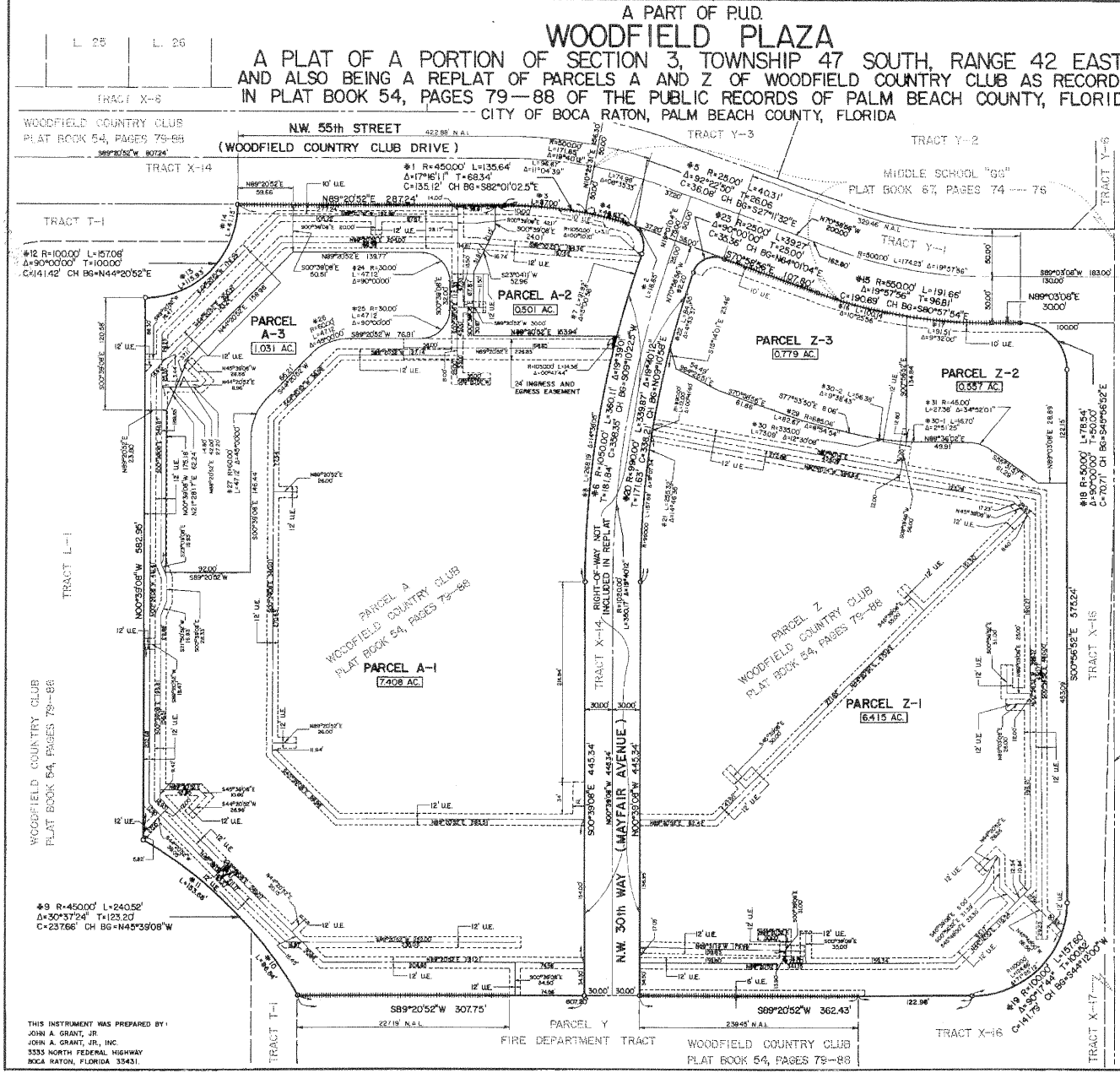


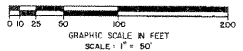
WOODFIELD PLAZA

A PART OF P.U.D. A PLAT OF A PORTION OF SECTION 3, TOWNSHIP 47 SOUTH, RANGE 42 EAST AND ALSO BEING A REPLAT OF PARCELS A AND Z OF WOODFIELD COUNTRY CLUB AS RECORDED IN PLAT BOOK 54, PAGES 79-88 CITY OF BOCA RATON, PALM BEACH COUNTY, FLORIDA



JOHN A. GRANT, JR., INC. CONSULTING ENGINEERS AND LAND SURVEYORS BOCA RATON, FLORIDA

MAY 1991 SHEET 4 OF 4



NOTES: Bearings shown herein are based on a bearing of S00°56'52\"/>

No buildings or any kind of structures shall be placed on utility or drainage or lake maintenance easements.

No trees or shrubs shall be placed on drainage easements or lake maintenance easements.

Approval of landscaping on utility easements, shall be only with the approval of all utilities having the right to occupy same. (This fence shall be placed on lake maintenance easements.)

There may be additional restrictions that are not recorded on this plat that may be found in the public records of this county.

- P.M.L. Indicates Permanent Reference Monument.
U.E. Indicates Utility Easement.
D.E. Indicates Drainage Easement.
N.A.L. Indicates Non-Access Line.

CURVE TABLE

Table with columns: NO., RADIUS, ARC, DELTA, TANGENT, CHORD, CHORD BEARINGS. It lists 29 curve data points for the project.

THIS INSTRUMENT WAS PREPARED BY: JOHN A. GRANT, JR. JOHN A. GRANT, JR., INC. 3333 NORTH FEDERAL HIGHWAY BOCA RATON, FLORIDA 33431.